



Cambridgeshire Horizons' Quality of Life Programme

**South Cambridgeshire D.C.
Cabinet meeting – 13 July 2006**

**Peter Studdert
Director for Sustainable Communities**



Quality of Life Programme Objectives

- To emphasise the need for quality as well as quantity in the growth agenda and to deliver ‘soft’ infrastructure alongside the ‘hard’ infrastructure
- To support and extend existing strategies and initiatives
- To identify gaps
- To build broadly-based partnerships
- To influence LDDs, master plans and future spending programmes



Key elements

- Balanced and Mixed Communities Good Practice Guide
 - Green Infrastructure Strategy
 - Major Sports Facilities Strategy
 - Arts and Cultural Strategy
- Also:
- Sustainable Construction Good Practice Guide
 - Design Quality Network
 - Community Governance research
 - Quality Charter for Growth



Balanced and Mixed Communities

- Joint project with Local Authorities and Private developers
- Focussing on good (and bad) practice from eight Case Studies including Cambourne
- Draws out the key lessons that need to be learnt and applied in the new neighbourhoods





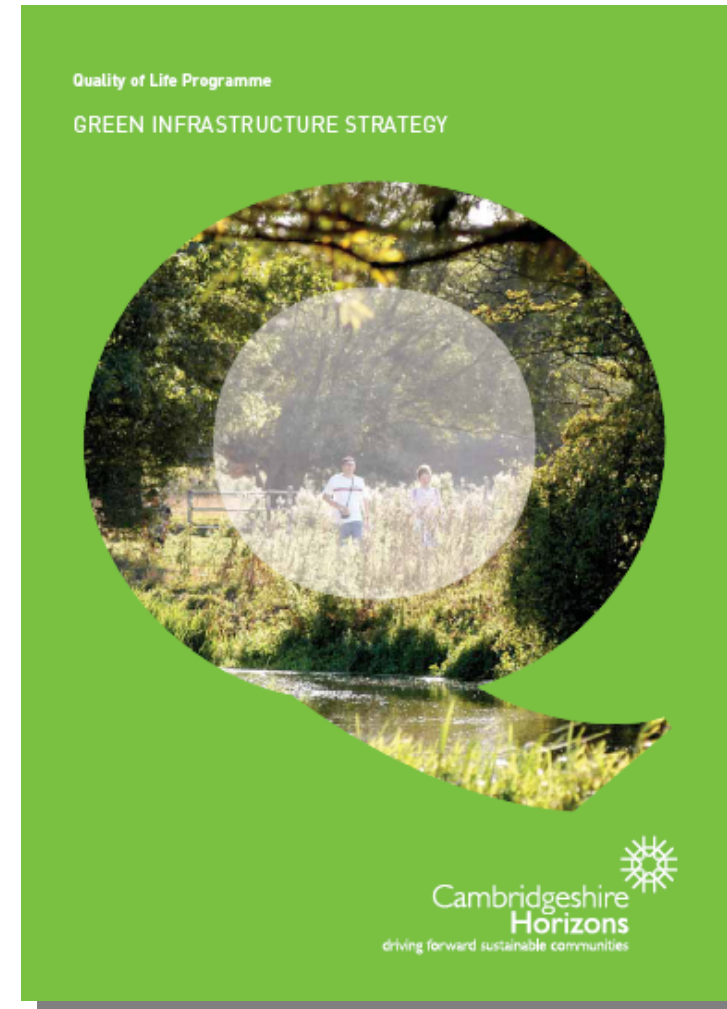
Quality of Life Strategies

- Covering Green Infrastructure, Major Sports Facilities and Arts and Culture
- Take a 20+ year horizons, but include short, medium and long-terms actions
- Each strategy was overseen by a Steering Group made up of Local Authority and relevant local, regional and national agencies



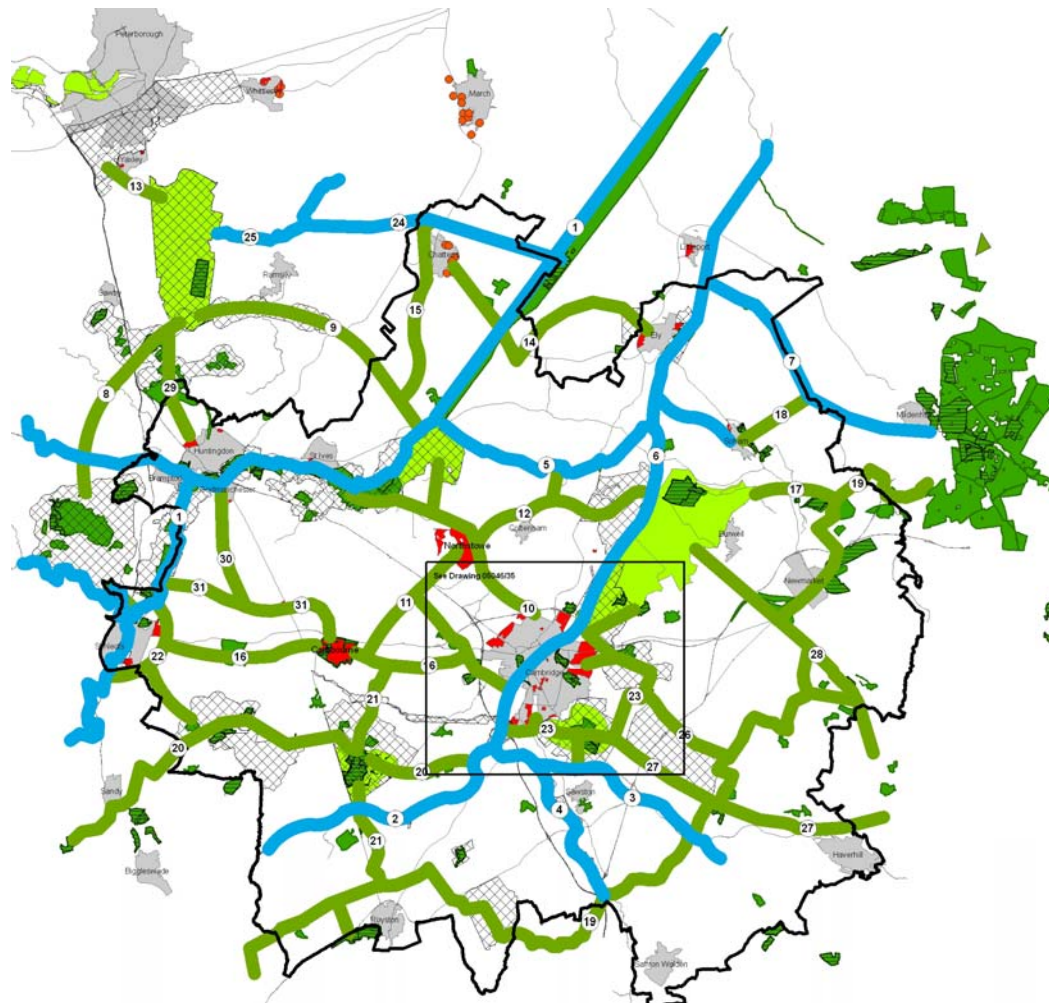
Green Infrastructure Strategy

- Prepared by The Landscape Partnership
- GIS mapping of 100 layers of constraints and designations across the County
- Analysis of deficiencies and identification of existing and new projects
- Long term strategy to develop three layers of activity: green corridors, key projects and area-based initiatives





Green Corridors



-  Cambridge Sub Region
-  8 New Green Corridor
-  2 Existing Green Corridor Enhanced
-  Existing and Proposed Green Hubs
-  District Council Green Infrastructure Initiatives
-  Accessible Green Infrastructure (>20ha)
-  Green Infrastructure (>20ha)
-  Major Development Sites (>100)
-  FDC Major Development (>100)
-  Settlements Over 5000

GREEN CORRIDOR INITIATIVES (See Table A)

- 1 Ouse Valley Strategic Green Space Corridor
- 2 River Rhee Enhancement Project
- 3 River Granta Enhancement Project
- 4 River Cam Enhancement Project
- 5 Old West River - Earsh to River Cam
- 6 Cam Valley - Cambridge to Ely
- 7 River Lark Enhancement Project
- 8 Great Ouse Waterway and Wetland project
- 9 Fen Edge Project
- 10 Guided Bus Route Green Corridor: Cycleway/Bridleway & Sculpture Trail
- 11 North West Cambridge Settlement Link
- 12 Northtove, Cottenham to Old West River, Denny Abbey and Wicken Fen Corridor
- 13 South Peterborough Green Park to Great Fen Link
- 14 Chatteris to Ely Green Corridor
- 15 Chatteris to Somersham Biodiversity and Access Corridor
- 16 Cambridge to St Neots Green Corridor
- 17 Wicken to Chippenham and Thetford Forest Corridor
- 18 Soham to River Lark Green Corridor
- 19 Icknield Way Enhancement Corridor
- 20 Barrington, Wimpole Hub and Forest of South Cambridgeshire to Greensand Ridge Corridor
- 21 Cambourne, Wimpole Hub to Chalk Downs and The Field Heath Corridor
- 22 Land East of St. Neots
- 23 Cambridge Outer Orbital Green Corridor
- 24 Fen Waterways project
- 25 Waterway link: Fen Waterway to Great Fen Project
- 26 Fleam Dyke
- 27 Roman Road Route
- 28 Devil Dyke Extension Project
- 29 Huntingdon towards Peterborough Cycleway/Bridleway
- 30 Godmanchester to Cambourne Corridor
- 31 Ouse Valley to Cambourne Corridor



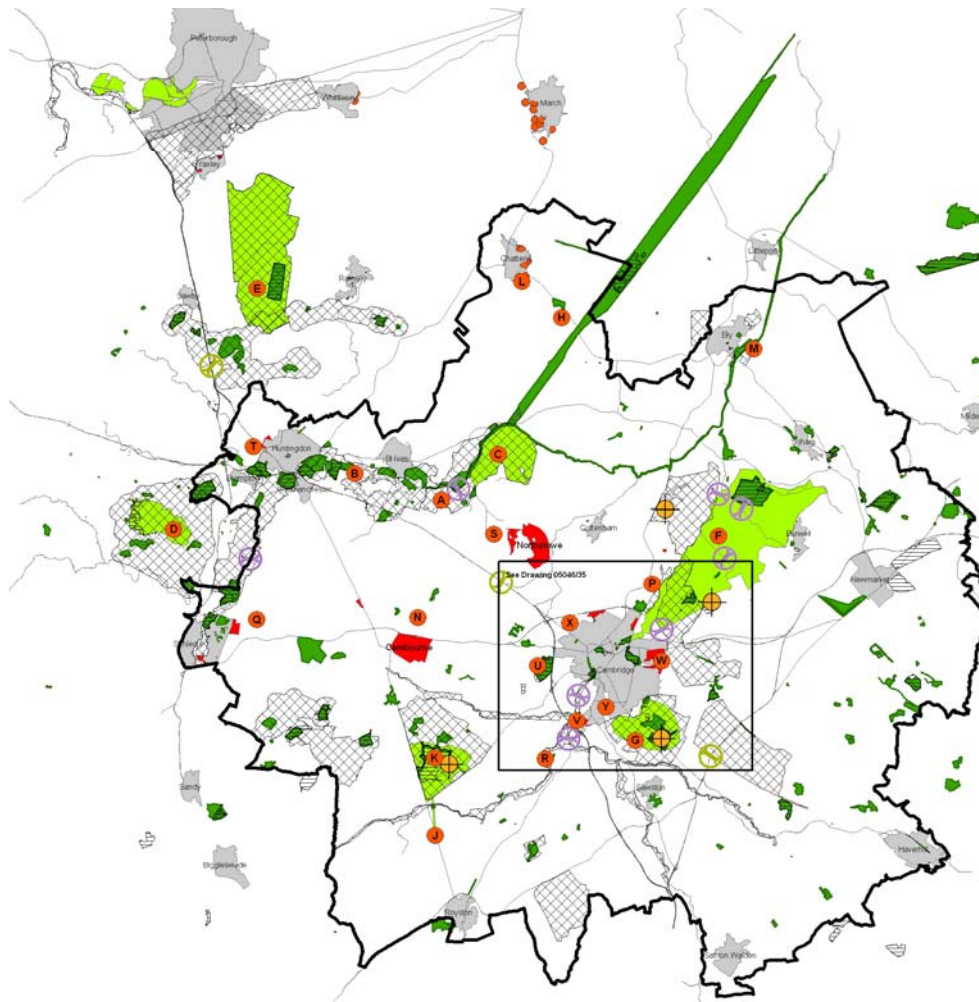
Project Green Infrastructure Strategy
for the Cambridgeshire Sub-Region
Drawing Sub-Regional Strategy
- Green Grid Network

Dwg No: 05046/31
Scale: 1:125,000 @ A1
Date: November 2005
Drawn: GF Checked: JB

Do not scale off drawing, all dimensions & levels are to be checked on site.
Any discrepancies must be reported to the landscape architect immediately.
©The Landscape Partnership Ltd.
Reproduced from the Ordnance Survey map with the permission of the



Key projects



-  Cambridge Sub Region
-  Exg and prop green hubs
-  Major New Green Infrastructure Site
-  Historic Cultural Centre
-  Proposed Green Bridge
-  Proposed Bridge Crossing
-  District Council Green Infrastructure Initiatives
-  Accessible Green Infrastructure (>20ha)
-  Green Infrastructure (>20ha)
-  Major Development Sites (>100)
-  FDC Major Development Sites (>100)
-  Settlements Over 5000

MAJOR GREEN INFRASTRUCTURE SITES & INITIATIVES
(See Table A)

- A Fen Drayton
- B Houghton Meadows (Part of Ouse Valley, Wet Woodland & Wet Meadows)
- C Handwicks Wet Fen Phase 1 & Phase 2
- D Gaffam Water Ancient and Semi Natural Woodland Link
- E Great Fen Project
- F Wisken Fen (2000)
- G Gog Magog Countryside Project
- H Ouse Washes Extension
- J Buntingford Chalk Grassland Improvements
- K Willoughby Mill Project
- L South Chatteris Country Park Strategic Open Space
- M Ely Country Park
- N Ringwood Recreation
- P Bowling Lake & Embankment Public Access & Recreation
- Q Land East of St. Neots
- R East Angles Chalk Grassland Improvements
- S Northolme Landscape Buffer & Country Park
- T North Wood of Handwicks Strategic Open Space Project
- U Colton Countryside Reserve
- V Southern Fringe, Monsanto Site
- W Cambridge East
- X HA8
- Y Southern Fringe/Addenbrooks

(NB: For Cambridge Inset, see Drawing 35)



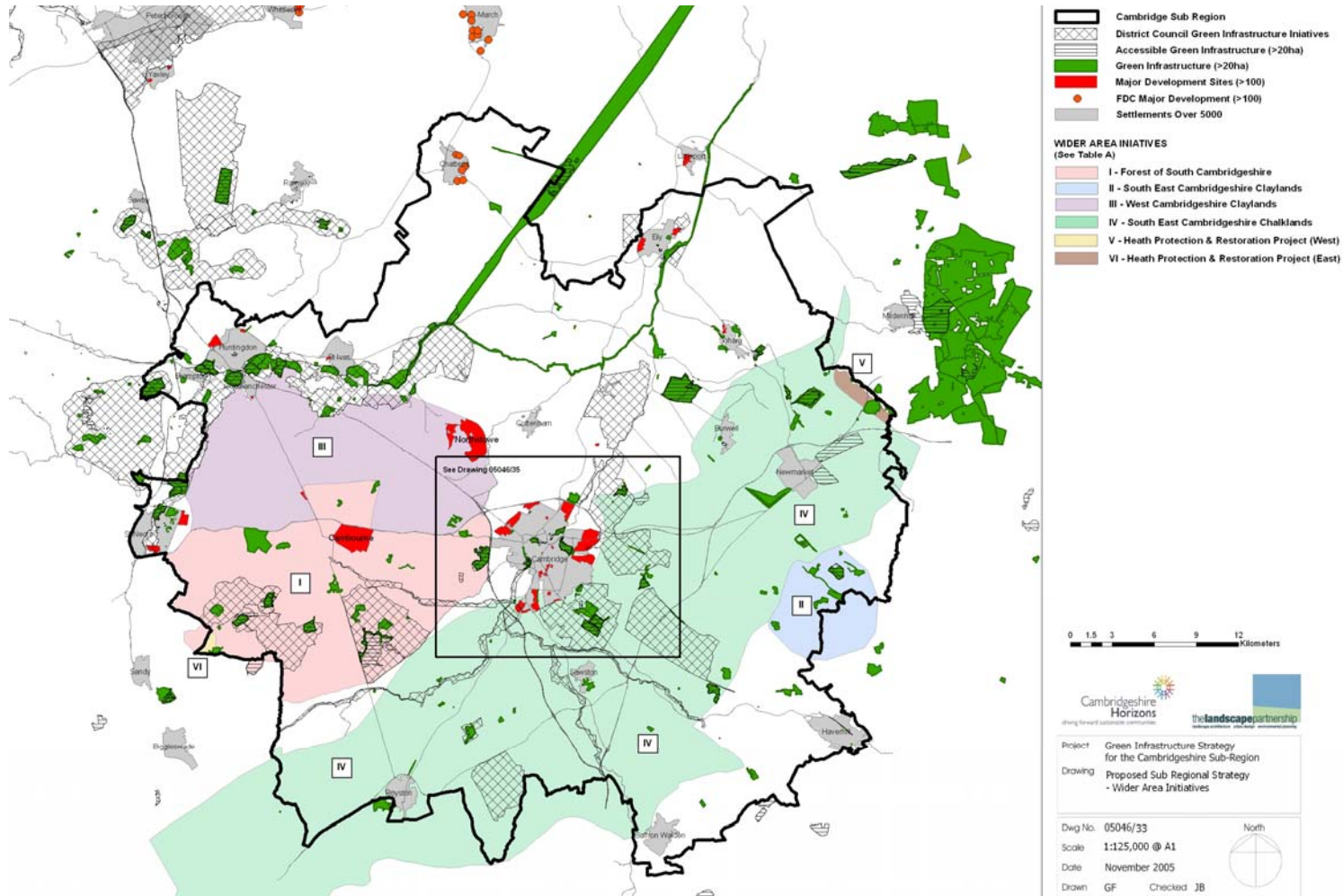
Project Green Infrastructure Strategy
for the Cambridgeshire Sub-Region
Drawing Sub Regional Strategy
- Major Green Infrastructure Sites

Draw No. 05046/32
Scale 1:125,000 @ A1
Date November 2005
Drawn GF Checked JB

Do not scale off drawing. All dimensions & levels are to be checked on site.
Any discrepancies must be reported to the landscape architect immediately.
©The Landscape Partnership Ltd.
Reproduced from the Ordnance Survey map with the permission of the
controller of Her Majesty's Stationery Office. Licence Number: 10000205.

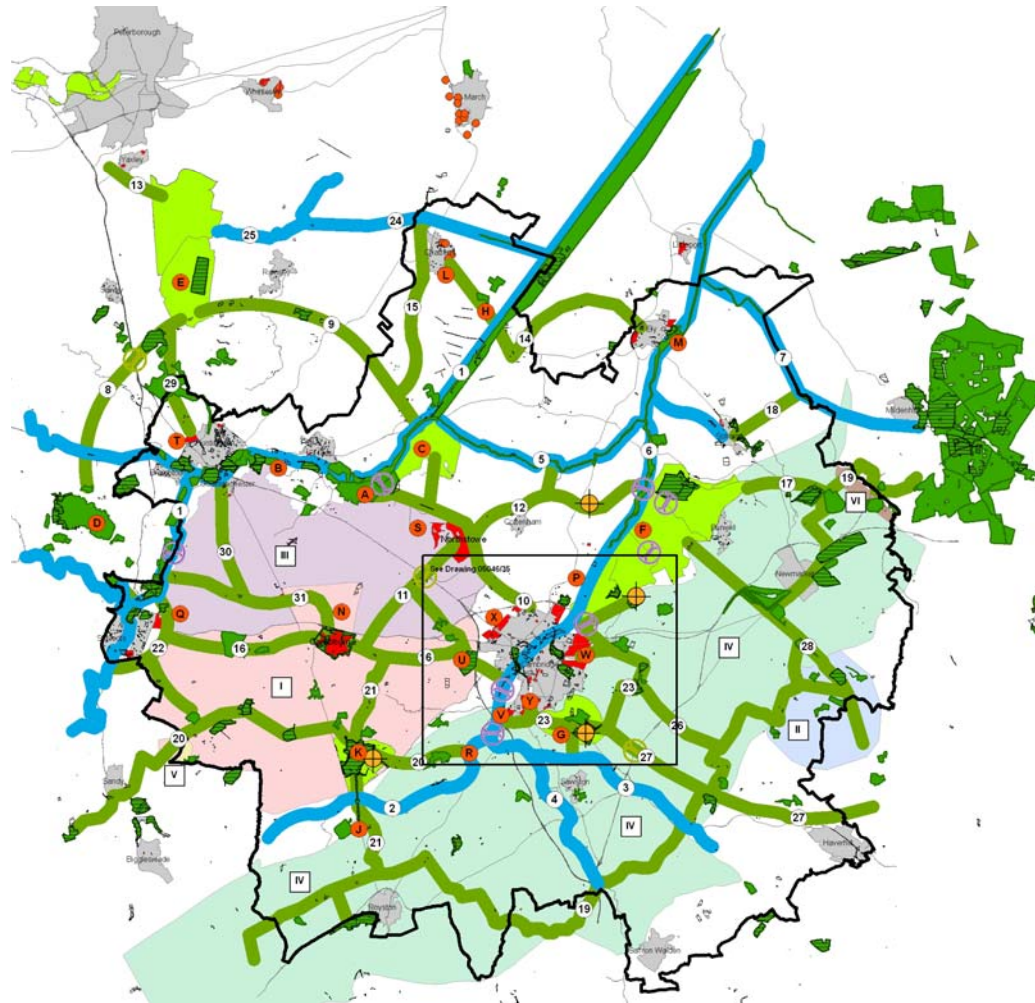


Area-based initiatives





Composite Map



KEY
(See Table A for Initiatives & Project Description)

- Cambridge Sub Region
- 8 New Green Corridor
- 2 Existing Green Corridor Enhanced
- Existing and Proposed Green Hubs
- Major New Green Infrastructure Site
- Historic Cultural Centre
- Proposed Green Bridge
- Proposed Bridge Crossing
- Accessible Green Infrastructure (>20ha)
- Green Infrastructure (>20ha)
- Major Development Sites (>100)
- FDC Major Development Sites (>100)
- Settlements Over 5000

WIDER AREA INITIATIVES

- I - Forests of South Cambridgeshire
- II - South East Cambridgeshire Claylands
- III - West Cambridgeshire Claylands
- IV - South East Cambridgeshire Chalklands
- V - Heath Protection and Restoration Project (West)
- VI - Heath Protection and Restoration Project (East)

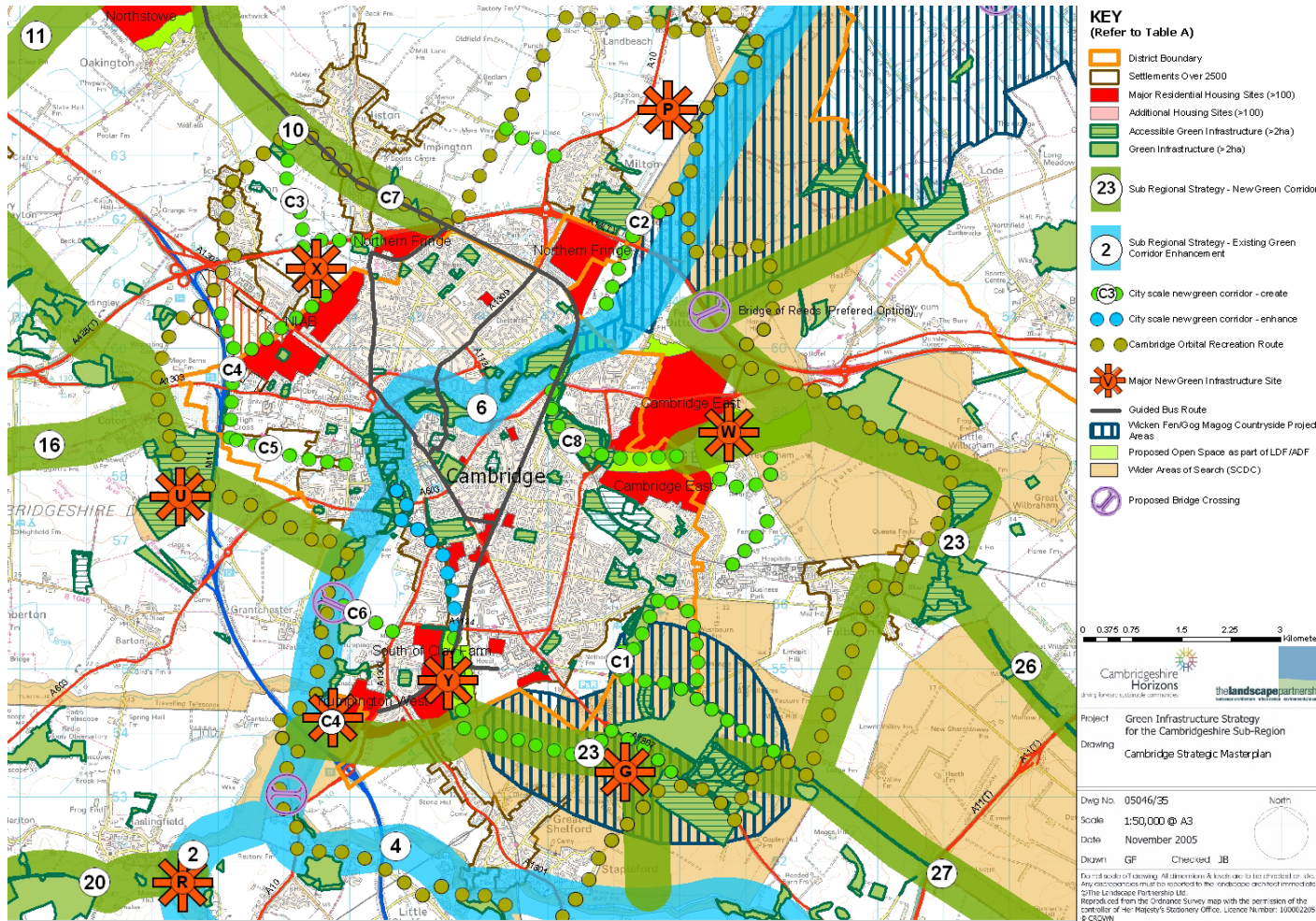


Project: Green Infrastructure Strategy for the Cambridgeshire Sub-Region
Drawing: Sub Regional Strategy - Masterplan

Drawn: GF Checked: JB
Date: November 2005
Scale: 1:125,000 @ A1
Dwg No: 05046/34

Do not scale off drawing. All dimensions & levels are to be checked on site. Any discrepancies must be reported to the landscape architect immediately. ©The Landscape Partnership Ltd. Reproduced from the Ordnance Survey map with the permission of the controller of Her Majesty's Stationery Office. Licence Number: 10002255 in r12406

Cambridge and its Fringes



Major Sports Facilities Strategy

- Prepared by PMP Consultants
- Comprehensive stock-take of sub-regional sports facilities on GIS base
- Supplementing Local Authority's PPG17 studies
- Analysis of gaps, deficiencies and opportunities (e.g. London Olympics)
- Examining financial sustainability





Sports Strategy strategic issues

- Sub-regional specialist priorities:
 - Rowing Lake
 - Ice Rink
 - 50metre swimming pool
 - Community stadium

- Other specialist priorities:
 - Gymnastics Centre
 - Martial arts
 - 8 Court Hall
 - Indoor tennis
 - Indoor cricket
 - Equestrian Centre
 - Water sports
 - Indoor bowls



Issues for South Cambridgeshire

- Sports provision at Northstowe:
 - 6-8 court sports hall
 - 25 metre 6-lane swimming pool
 - Health and fitness facilities
 - Minimum of 1 full sized synthetic pitch
 - 3 rink indoor bowls provision
 - Indoor tennis provision
 - Potential replacement of a golf course with an open access policy
 - Potential for other specialist facilities subject to transport assessment

Arts and Culture Strategy

- Prepared by David Powell Associates
- Stock-take of cultural assets and facilities identifying potential pressures, gaps and opportunities
- Particular focus on opportunities presented by Northstowe and Cambridge East
- Exploring potential roles for the creative industries
- Developing an implementation plan





Arts and Culture Strategic Issues

- Sub-regional cultural partnership – to make the case for culture in the growth agenda
- Basis for s106 contributions and establishment of a Cultural Trust
- Opportunities to engage creative industries in the growth strategy
- Specific recommendation to explore a long term plan for a major new performance venue in East Cambridge
- Outline Business Plan and Funding Options



Issues for South Cambridgeshire

- Arts provision for Northstowe:
 - Purpose-built arts facility – part of the Civic Hub?
 - Studio/project space in each school
 - Important role for community arts provision in helping to build the new communities
 - Importance of public art in adding distinctiveness to new places
 - Early provision of facilities for artists and creative industries – e.g. short-term use of barracks buildings?
 - Support for commercial cultural uses in the town centre
 - Important links to Local Management Organisation and Town Centre Management



Next steps

- Strategies being launched in June and July
- Consideration by Local Authorities and partner organisations during summer plus opportunity for wider public feedback via Horizons website
- Immediate influence on emerging master plans for Northstowe and other major developments
- Report back to Horizons Board in autumn to consider response and priority actions
- Longer term influence on Local Development Documents and spending programmes

Questions and discussion

